



Italy
Palermo
03/09 OCTOBER
2022

SAILING INSTRUCTIONS

ORGANIZING AUTHORITY AND LOCATION OF RACE

Albaria ASD

Viale Regina Elena 89/A 90149 – Palermo - ITALY

TEL. +39 091 453595 / +39 3665025409

e-mail albaria@albaria.com

LAT 38.196321, LONG 13.333629

Albaria ASD (Albaria) in conjunction with the International Windsurfer Class Association (IWCA), Italian Sailing Federation (FIV), recognized by World Sailing (WS) welcomes the Windsurfer Class (WC) Sailors participating into the 2022 Windsurfer World Championships and their companions.

[DP] denotes a rule for which the penalty is applied according to the RRS Introduction.

[NP] denotes that a breach of this rule will not be grounds for a protest by another competitor.

[SP] denotes a rule for which a standard penalty may be applied by the race committee without a hearing. This changes WCR A5.

1. RULES

- 1.1. The event will be governed by the rules as defined in the Racing Rules of Sailing (RRS) 2021 – 2024 - Windsurfing Fleet Racing Edition (WCR). Except where they are changed by the Notice of Race (NOR) or by the Sailing Instructions (SI).
- 1.2. [DP] The WC Rules will apply.
- 1.3. When racing Class Rule C.1 apply.
- 1.4. National prescriptions will not apply.
- 1.5. If there is a conflict between the SI and the NOR or any other document governing the event, the SI will take precedence. This changes WCR 63.7.
- 1.6. The RRS P1.2 will apply

2. [SP] [NP] ADDITIONAL IDENTIFICATION AND ADVERTISING

- 2.1. Each competitor shall wear an event lycra shirt or vest outside of their clothing provided by the organiser. Each competitor shall place stickers on the astern of the board issued by the Organizing Authority (OA) at the equipment inspection. Competitors shall not cut or adapt the stickers in any way.
- 2.2. Event stickers or event lycra shall not be cut, trimmed, or altered in any way;
- 2.3. Penalties:
 - 2.3.1. Failure to comply with SI 2.1 and/or 2.2 will result in a 2 points penalty without a hearing for the first race sailed on the day;
 - 2.3.2. Application of these penalties shall not result in a board being scored worse than a DSQ;
 - 2.3.3. If no race is completed on the day of the infringement the penalty will

be applied to the most recent completed race in the series or, if there were no races previously completed, to the next completed race in the series.

3. NOTICES TO COMPETITORS

Notices to the competitors will be posted on the Official Notice Board(s) (ONB) - online at < <https://www.windsurferclass.org/events/windsurfer-world-championships22/official-notices-board/> > and in front of the Race Office (RO).

Official documents of the Jury (or the Race Committee (RC)) for the hearing requests or any other official requests will be available at the RO (See Appendix A).

4. CHANGES TO SAILING INSTRUCTIONS

Any change to the Sailing Instructions will be posted on the Official Notice Board not less than 60 minutes before the scheduled warning signal of the day that it takes effect, except that any change affecting the schedule of the next day's racing will be posted not later than 20.00hrs.

5. SIGNALS MADE ASHORE

5.1. Signals made ashore will be displayed at the Official Flagpoles (with white flag 'A' on top for race area 'A' and with white flag 'B' on top for race area 'B') located in front of the RO. **(See Appendix A – Official Race Locations).**

5.2. When the **AP Flag** is displayed '1 minute' is replaced by 'not less than 30 minutes'. This changes WCR Race Signals.

5.3. **[NP][DP]Flag D** with a sound signal means: 'the warning signal will be made not less than 30 minutes after flag D is displayed or the scheduled time, whichever is later.' Boats shall not leave their berthing places until this signal is made.

6. EVENT PROGRAM AND FORMAT

The following program is indicative and subject to variations. The event takes place in public areas and is subject to all legal provisions issued by local and national authorities.

October 3 Monday	11:00 18:00 Registrations
October 4 Tuesday	9:00 15:00 Registrations and boards distribution 15.30 Skipper's meeting 16.30 Practice Race 19:30 Opening Party
October 5 Wednesday	10.30 Skipper's meeting 12:00 First possible start 20:00 Live music party
October 6 Thursday	09:30 Skipper's meeting 10.30 First possible start 19:00 Beach party
October 7 Friday	09.30 Skipper's meeting 10.30 First possible start 19:00 Beach party
October 8 Saturday	09.30 Skipper's meeting 10.30 First possible start 20:30 Music party "On the Beach"

October 9 Sunday	9.30 Skipper's meeting 10.30 First possible start 15:00 Last possible start 17:00 Prize-giving and Closing Ceremony
-----------------------------	---

- 6.1. No starting signal will be given after 15:00 of the last day of racing.
- 6.2. There are scheduled **up to 9 Course Racing races, 1 x Marathon, 1 x Slalom and 1 x Freestyle events.**
- 6.2.1. Course Racing: up to 9 races for each category and up to 4 races per day (max 3 races back-to-back).
- 6.2.2. Long Distance: single fleet, distance not more than 15 NM (see **Appendix B**)
- 6.2.3. Slalom: Slalom course with elimination heats of 6 to 10 sailors, followed by a final for each category. (**See Appendix C**)
- 6.2.4. Freestyle: all competitors will be requested to indicate either prior to the regatta or at registration if they wish to enter the freestyle event.
- 6.3. **The event/s for each day will be advised at that day's briefing.** Multiple briefings may be conducted during the day before each race session.
- 6.4. The competition schedule will be in accordance with the race program as well as notices to competitors.
- 6.5. To alert boards that a race or sequence of races will begin shortly, an orange flag will be displayed with one sound signal for at least three (3) minutes before a warning signal is displayed.
- 6.6. Wind Limits: Course Racing and Long Distance – a starting procedure will require a steady wind speed of at least 4 knots which may be adjusted by the RC.

7. COURSES AND POSSIBLE FLEET DIVISION

Course Racing: There will be two racing areas, 'A' and 'B'. Each category will race separately.

Long Distance: single fleet with category scoring to be advised.

Slalom: Preliminary heats in weight categories, followed by a final combining the top 4 from each weight category

Freestyle: initial elimination rounds, with each heat containing 5 sailors, with the top 10 sailors overall across all the heats (or greater depending on numbers of entrants), to proceed to an individual routine final.

8. WEIGHT CATEGORIES / FLEET FLAGS

- Category A: Yellow Flag Lightweight (may include U15 – U19 sailors)
- Category B: Blue Flag Medium weight (may include U15 – U19 sailors)
- Category C: White Flag Medium heavy weight (may include U15 – U19 sailors)
- Category D: Orange Flag Heavy weight (may include U15 – U19 sailors)
- Category F: Pink Flag Women (may include U15 – U19 sailors)

Under15 – Under19 competitors must be younger than 15 and 19 years of age respectively on October 3rd, 2022. See NOR for additional information regarding the 'Floating System'.

9. RACING AREA

9.1 The course racing area is an area extending 50 meters beyond the course including the starting line, the finishing line, and their extensions, in which a board normally sails while racing. The Racing area will be in Mondello Bay, and the courses set up based on wind conditions/direction and event type.

9.2 The possible positions of the racing areas 'A' and 'B' are indicated in appendix A.

9.3 [DP] Boards not racing shall avoid the racing area.

10. COURSES

The diagram in Appendix B shows the probable courses for the **Course Racing** event. The RC may change the course racing format to suit weather and logistics for the event.

Small adjustments can be made to the buoys to be considered in relation to slight variations in wind direction / intensity without exposure of flag C with repeated sounds; course adjustments can be made before competitors are on the side of the mark that can be moved, this changes the RRS 33.

If a gate mark is missing and is not replaced as described in RRS 34 then the remaining mark must be left to port. This changes the RRS 34.

Included in Appendix B is the likely course for the **Long-distance** event, where there will be a "Mandatory briefing" on the day selected to hold this event.

For the **Slalom** format, see Appendix C for the layout of the slalom course. The slalom event will be held in front of the RO, as close to the beach as possible to provide maximum visibility, without compromising the weather conditions for the participants.

The **Freestyle** event is aimed to allow maximum participation, whilst managing the time required to complete the event. Therefore, all entered competitors will be randomly allocated into 5 person heats (possibly from the same weight group to safeguard the overall program), performing 3-minute routines simultaneously. Based on a standard scoring guideline, the top 10 sailors (or 15 depending on entry numbers) across all the heats will progress to a final. Each finalist will then perform an individual 3-minute routine. The free style evaluators will be identified by the Windsurfer Class.

Further information for each course and event will be made available on the ONB's.

11. MARKS

11.1. Course Racing 1

- Course marks – yellow inflatable cylindrical
- Start mark – Race Committee Signal Vessel and a pin end boat with staff and orange flag
- Finish mark – A Race Committee vessel and blue cylindrical buoy.

11.2. Course Racing 2 and 3

- Course marks – orange inflatable conical
- Change mark – yellow inflatable cylindrical
- Start mark – Race Committee Signal Vessel and a pin end boat with staff and orange flag
- Finish mark – A Race Committee vessel and yellow cylindrical buoy.

11.3. Long Distance

- Long distance marks will be described at the “Mandatory Briefing” on the selected day.

11.4. Slalom

- Slalom marks will be yellow buoys but will be clarified on the ONB's.

11.5. Freestyle

- The demarcated area for the Freestyle event will be confirmed on the ONB's.

12. THE START

12.1. **Course Racing** will be started according to WCR 26.

Meaning	Time to go
Warning signal – Class Flag	5”
Preparatory signal	4”
One minute to start signal	1”
Start	0
Stop “Pumping signal”	After 30 seconds

12.2 To alert boats that a race or sequence of races will begin soon, the orange starting line flags will be displayed with one sound for at least five minutes before a warning signal is displayed.

12.3 The starting line will be between staffs displaying orange flags on the starting marks.

12.4 Not later than the Warning signal the course to be sailed will be displayed.

12.5 A board starting later than 4 minutes after her starting signal will be scored Did Not Start (DNS) without a hearing. This changes WCR A4 and A5.

12.6 When an Individual Recall has been signaled or a board breaks rule 30.3 and / or 30.4, the Race Committee will display her sail number on the Race Committee Signal Boat before the first competitor has finished the race. Failure to display the sail numbers(s) will not be grounds for redress. This changes WCR 62.1(a).

Slalom event rules, elimination system, starting sequences, buoyancy and responsibility guidelines will be made available on the ONB's.

13 CHANGE OF THE NEXT LEG OF THE COURSE

To change the next leg of the course, the race committee will lay a new mark (or move the finishing line) and remove the original mark as soon as practicable. When in a subsequent change a new mark is replaced, it will be replaced by an original mark.

For Course Racing course 1 (trapeze) there is no change of course.

14 THE FINISH

The finishing line will be between a staff displaying a blue flag on the race committee boat and nearby laid mark.

15 COURSE RACING TIME LIMITS AND TARGET TIMES

15.1 The target time for the first finisher is 25 minutes.

15.2 The time limit for the first board in each race to reach the first mark is **15 minutes**.

15.3 The time limit for the first board **to finish a race is 40 minutes**.

15.4 If the time limits in SI's #15.2 and #15.3 are exceeded the race shall be abandoned.

15.5 Boards failing to finish within 15 minutes after the first finisher in their respective division shall be scored DNF. This changes WCR 35, A4 and A5.

15.6 Failure to meet the Target Time will not be grounds for redress. This changes RRS 62.1(a).

16 PROPULSION

16.1 Class Rule C 1.1. (d): RRS 42 is amended to read:

A board shall be propelled only by the action of the wind on the sail and by the action of the water on the hull through the unassisted actions of the competitor except that when:

(i) Course racing
and

(ii) competitors are sailing to windward or on a close-hauled course pumping (continuous and/or repetitive movement of the rig to induce wind-flow over the sail) is prohibited except for the first 30 seconds after the starting signal.

Pumping shall be unrestricted for the marathon and slalom events.

16.2 The RRS P1.2 will apply

16.3 Appendix P of RRS is modified as follows for all categories:

- P2.1 first and second penalty: when a boat is firstly and secondly penalized under Rule P1.2 her penalty shall be **two-turns** penalty under RRS 44.2. If she fails to take it she shall be disqualified without a hearing.
- P2.2: Third penalty: When a boat is penalized the third time during the event she shall promptly retire. If she fails to do so she shall be disqualified without a hearing and her score shall not be excluded.
- P2.3: Subsequent penalties: RRS P2.3 do not apply and RRS P2.2 apply in every infraction after the third penalty.

17 SPARE / RESERVED

18 HEARING REQUEST

18.1 Hearing request forms are available in the Race Office. Protest and request for redress and reopening shall be delivered at the Race Office within the appropriate Protest time limit.

18.2 Special attention shall be given to WCR 61.1 (a) "...She shall inform the Race Committee of her intention to protest as soon as practicable after she finishes or retires"

18.3 [DP][NP] Boards retiring from racing after finishing shall complete a Retirement Declaration Form at the Race Office before the protest time limit.

18.4 The Protest Time Limit is 60 minutes after the last board has finished the last race of the day or the display of AP+ A or N+A, whichever is later.

18.5 Notices will be posted no later than 20 minutes after the protest time limit to inform competitors of hearings in which they are parties or named as a witness. Hearings will be held in the protest room.

18.6 For the Slalom events the hearings will be held on the water immediately after each heat by the Jury (see Appendix C for the Slalom).

19 COURSE RACING SCORING

- 19.1 The Low Point System will apply.
- 19.2 Three course races are required to be completed to constitute a series.
- 19.3 When fewer than 4 course races have been completed, a board's series course racing score will be the total of her race scores.
- 19.4 When from 4 to 7 course races have been completed, a board's series course racing score will be the total of her race scores excluding her worst score ("one drop").
- 19.5 When 8 to 13 races have been completed, a board's series course racing score will be the total of her race scores excluding her two worst scores ("two drops"). This changes Appendix B A2 (a) and (b).

20 OVERALL SCORING – See Appendix D

21 [DP] [NP] REPLACEMENT OF EQUIPMENT (BOARD AND SAIL NUMBER)

Substitution of damaged (or lost equipment) cannot be changed during the championship except in case of unintentional and unrepairable damage and must be authorised by the Technical Committee (TC). Request for substitution shall be made in writing at the first reasonable opportunity. Forms for replacement are available at the Race Office.

In all racing events Junior Under 15 competitors may use the 4 and 4.5 sqm class sails, with same sail number as the standard regatta sail.

In the Freestyle event, all competitors must use standard board, sail, mast, and boom (the equipment) with 'grandfathering' permitted. Smaller Windsurfer brand training sails can be used (4.0 or 4.5m). There will be no restrictions on the daggerboards and fins. Other non-standard equipment may be used only with approval by the TC.

22 EQUIPMENT CHANGES AND MEASUREMENT CHECKS

The event will be sailed in Windsurfer Class boards as recognized by World Sailing (WS).

Equipment may be inspected for compliance by the appointed measurement officials from WS or the IWCA. All materials must be approved by the IWCA.

- 22.1 Each competitor shall register at the race office and complete all required registration and equipment inspection formalities before racing. A competitor that does not complete all required registration and equipment formalities will not be entered to the event under RRS 75.
- 22.2 Information on equipment inspection will be posted on the official notice board. The board shall be presented with all equipment that shall be used in the event, with the board, mast, boom and sail, and the centreboard and fin ready for inspection.
- 22.3 Equipment inspection will take place in front of the board park the boat park to the schedule posted on the official notice board. (See Appendix A)
- 22.4 [DP][NP] A board or equipment may be inspected at any time for compliance with the Class Rules and Sailing Instructions. On the water, a board can be instructed by the Race Committee or Technical Committee to proceed immediately to a designated area for inspection.
- 22.5 Substitution of equipment will not be allowed unless authorized by the Race Committee. Requests for substitution shall be made to the Committee at the first reasonable opportunity.
- 22.6 Competitors shall not wear or carry clothing or equipment for the purpose of increasing their weight. However, a competitor may wear a drinking container that shall have a capacity of at least one litre and weigh no more than 1.5 kilograms when full.

23 [NP] OFFICIAL BOATS

Official boats will be identified as follows:

Race Committee signal Boat	White Flag on 'A' or 'B' in Black
All other Race Committee Boats	Club Burgee
Jury Boat	Yellow Flag with 'J' in Black
Rescue and Support Boats	Blue Flag with Number in White
Coach Boats	White Sticker marked with black National Letters (RRS G1)

24 [NP] [DP] SUPPORT BOATS

- 24.1 Coach and support boats shall stay outside areas where boards are racing from the time of the preparatory signal for the first fleet to start until all boards have finished or retired or the race committee signals a postponement or abandonment except to assist a crew in distress or at the request of the Race Committee.
- 24.2 Support boats shall comply with any reasonable request from a race official.
- 24.3 A personal flotation device shall be worn by all support boat personal at all times while afloat.
- 24.4 Support boat drivers shall use the kill cord in the recommended manner.
- 24.5 All coach boats shall carry a tow rope (minimum 15 metres long and 8 mm thick)
- 24.6 An alleged breach of any of the regulations in SI #20 may be referred to the Race Committee and Protest Committee. The Race Committee may instruct the organizing authority to withdraw accreditation and access rights to the regatta venue and the course areas from the offending party without the option of replacement during the regatta.
- 24.7 Each coach/support boat is required to carry a VHF radio capable of transmitting and receiving all international ship-to-ship channels. Official VHF channel is number 72.

25 [DP] [NP] TRASH DISPOSAL

As sailors, we seek to protect and restore our waters. Boards shall not intentionally put trash in the water. Trash may be placed aboard support and race committee boats.

26 ELECTRONIC COMMUNICATIONS

Radio: except in an emergency, a boat shall neither make radio transmissions while racing nor receive radio communications not available to all boards. This restriction also applies to mobile phones.

Tracking equipment: during the marathon only, competitors may carry a mobile phone or GPS device. This allows for a competitor to use a GPS-based application, or similar, for a remotely located guest to follow their on-water progress.

27 PRIZES

Prizes will be given according to the NOR.

28 RIGHTS TO USE NAME AND LIKENESS

By participating in this event, competitors automatically grant to the organizing authority and the event sponsors the right, in perpetuity, to make, use, and show, at their discretion, any photography, audio and video recordings, and other reproductions of them made at the venue or on the water from the time of their arrival at the venue, until their final departure, without compensation.

29 [DP] [NP] SAFETY REGULATIONS

- 29.1 [SP] It is mandatory to Sign in & Sign out every day. The infringement of this SI will be penalized with 2 points according to RRS 64.2
- 29.2 Competitors shall always whilst afloat wear a personal flotation device that shall conform to the minimum standard ISO 12402-5 (level 50).
- 29.3 Competitors and support persons shall comply with any reasonable request from an event official. Failure to comply may be misconduct.
- 29.4 Reasonable actions by event officials to implement COVID-19 guidance, protocols, or legislation, even if they later prove to have been unnecessary, are not improper actions or omissions.
- 29.5 **BOARDS STORAGE** – A competitor's board and equipment must be stored in their personal allocated storage rack position within the designated board storage area. The storage area for competitors will be available from Monday (Oct 3rd) until Sunday (Oct 9th) after the races. To promote efficient use of this facility, competitors are encouraged to label equipment. The RC may request for all equipment to be de-rigged and placed on the associated board located in its storage rack.

30 DISCLAIMER OF LIABILITY

- 30.1 Competitors who participate in the competition at Albaria ASD do so entirely at their own risk and responsibility. Attention is drawn to Fundamental Rule 4 Decision to Race, which states "The responsibility for a board's decision to participate in a race or to continue racing is hers alone".
- 30.2 Albaria ASD, the IWCA and the Italian Windsurfer Class Association, its officers, officials, members, servants, volunteers, and agents accept no liability with respect of loss of life, personal injury or loss or damage to property which may be sustained by reason of competitors' participation or intended participation in the event or howsoever arising in connection with the event.

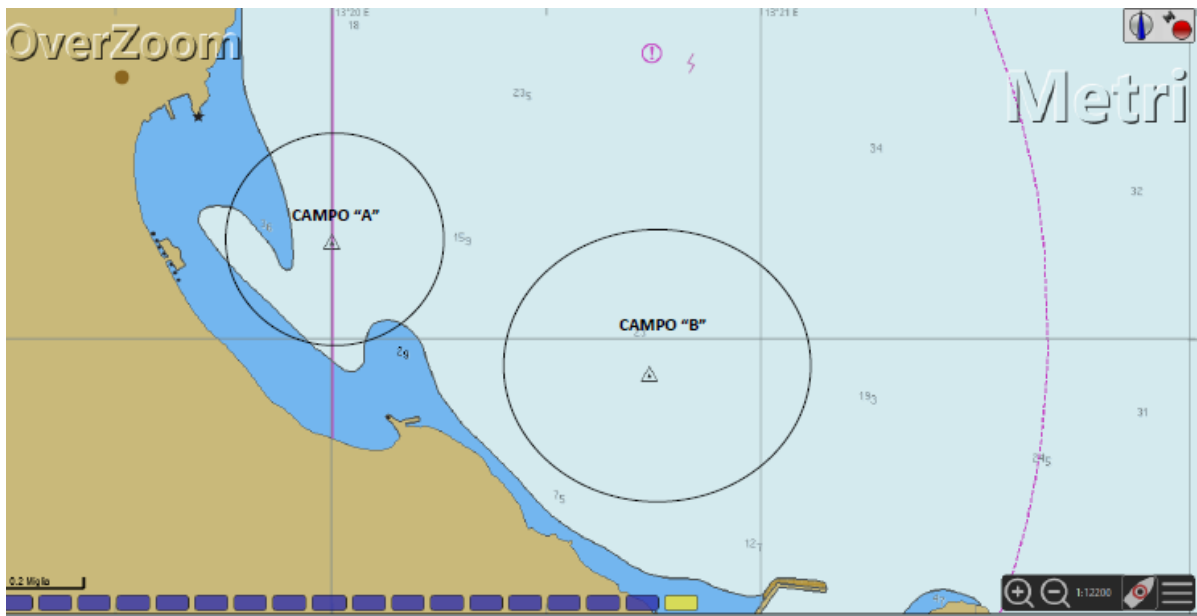
31 ENTRY DISCLAIMER

It is the competitor's sole decision to enter this event and to start and or to continue to compete. By way of entering, competitors acknowledge and agree that participation in this event can be dangerous and accept that their participation is at their exclusive risk in every respect. In addition, by way of entering competitors shall hold harmless the organizing authority, its officers, members, servants and agents and all other competitors in respect of all liability for injury to their person and or loss or damage to their property howsoever arising from their participation or intended participation in this event and acknowledge and accept that the organizing authority, its officers, members, servants, agents and other competitors accept no responsibility in respect to loss of life, personal injury or loss or damage to property which may be sustained by reason of a competitor's participation or intended participation in this event or arising for whatever reason in connection with this event.

All competitors will be required to sign an entry form at registration that includes an entry disclaimer.

By way of entering, competitors also agree to compete in a spirit of good sportsmanship, which promotes safe, fair, and inclusive sport.

APPENDIX A

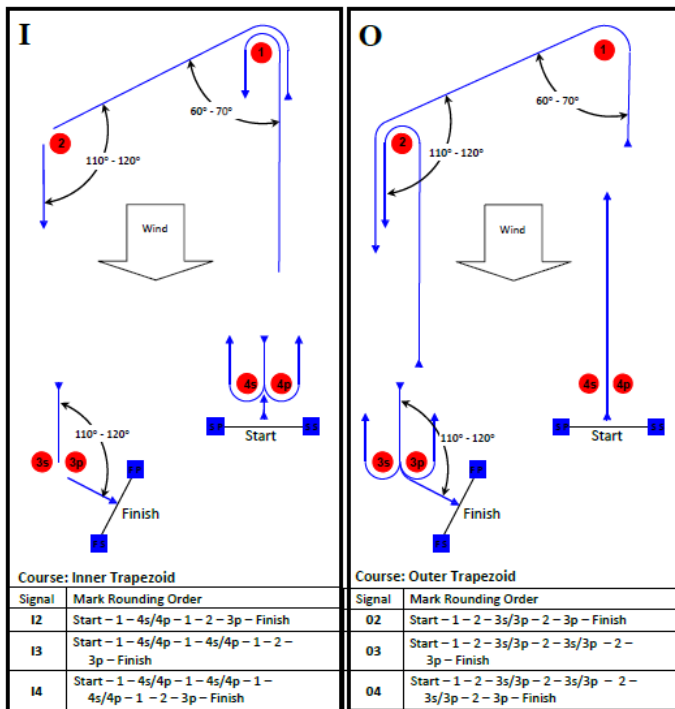


CAMPO "A" : Lat. 38° 12' 10 N - Long. 13° 19' 55 E - raggio 0,25 mg.

CAMPO "B" : Lat. 38° 11' 56 N - Long. 13° 20' 44 E - raggio 0,30 mg

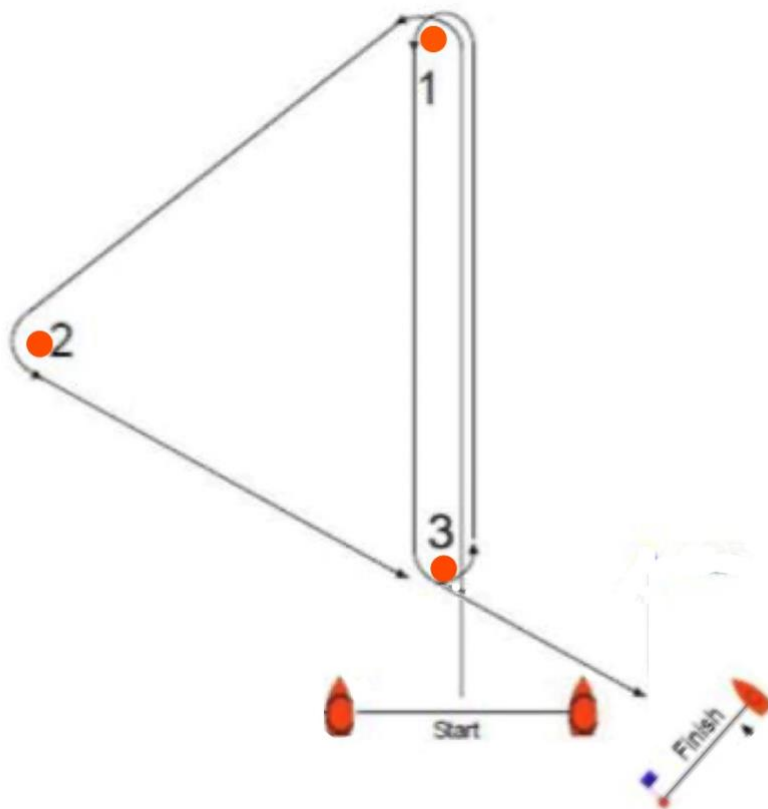
APPENDIX B

COURSE RACING COURSE 1 – White Flag with number 1 in black. The course to be sailed on the whiteboard.



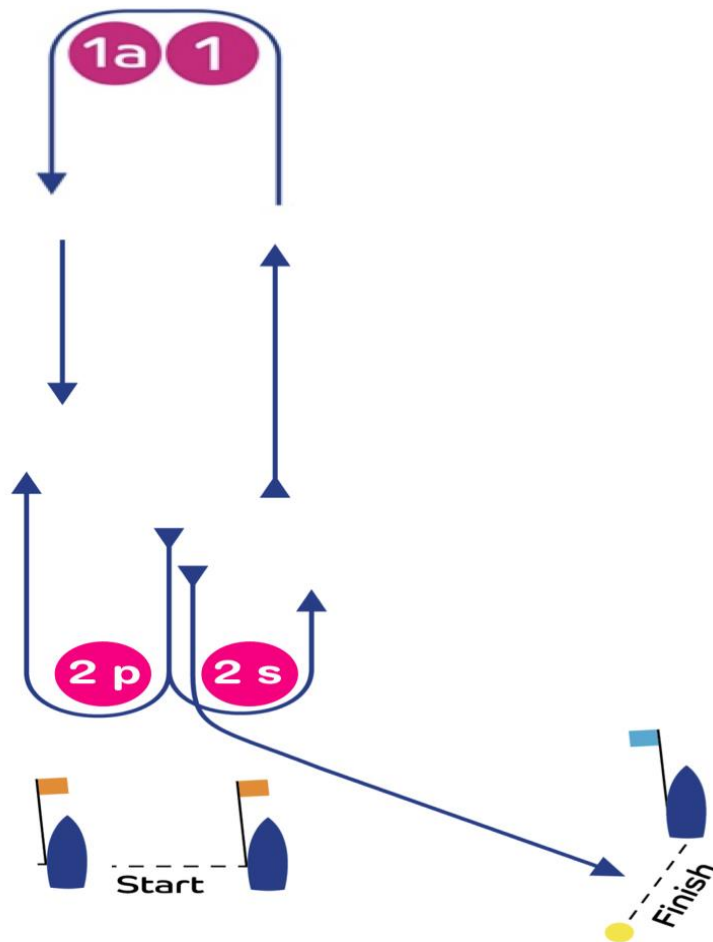
COURSE RACING COURSE 2- White Flag with number 2 in black.

The course is "triangle" as in the diagram. The RC can change/modify the class flags and the course by removing mark #2 by giving appropriate notification.



COURSE RACING COURSE 3 - White Flag with number 3 in black.

**The course is WINDWARD-LEEWARD COURSE AS SHOWN BELOW".
The RC can change/modify the class flags and the course.**



M.

LONG DISTANCE COURSE



APPENDIX C

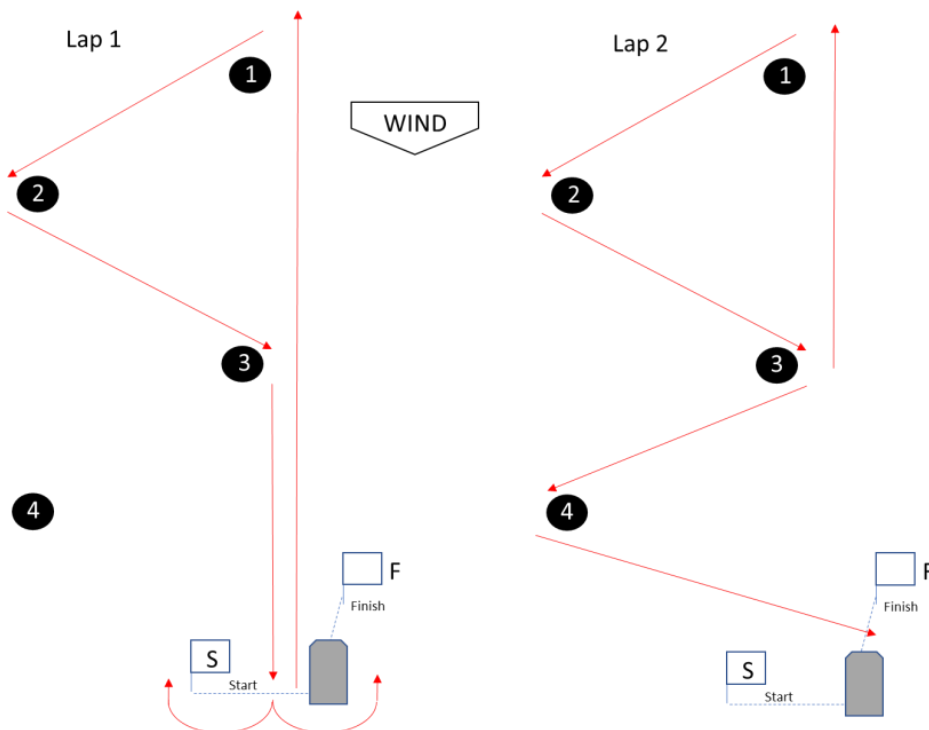
SLALOM COURSE (4 BUOYS)

The course is "P" / "M" as in the diagram.

Start – 1 (Port) – 2 (P) – 3 (S) – Start (Gate) – 1 (P) – 2 (P) – 3 (S) – 4 (P) – Finish

Scoring System: heats of "n" boards, first "n/2" processing to the next round. Single or double elimination.

Final with 8 sailors.



APPENDIX D

OVERALL SCORING

Shall be the addition of the Course Racing, Slalom and Long-Distance Points.

Course Racing

The RSS Appendix A – Low Points System will be used based on the finishing position in the category (weight division).

Added to this is the sailors average score in each counted race.

Slalom

The RSS Appendix A – Low Points System will be used based on the finishing position in the weight division.

Men

The final category heat determines the position for the top 10 sailors, however if the top 4 sailors compete in the grand final series, their position in the grand final series will determine their finish position.

The first, quarterfinal and semifinal heats will result in 8, 4 and 2 sailors respectively being on equal positions where they will be allocated the same points.

Sailors who are OCS, DSQ, DNS, DNF will score the points for last place in their heat.

Women

The final heat determines the final ranking and podium positions for the sailors.

The first, quarterfinal and semifinal heats will result in 8, 4 and 2 sailors respectively being on equal positions where they will be allocated the same points.

Sailors who are OCS, DSQ, DNS, DNF will score the points for last place in their heat.

Long Distance

The RSS Appendix A – Low Points System will be used based on the finishing position in the weight division.